



Abalone

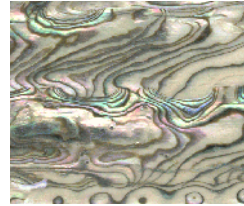
Abalone Sheets 5½" x 9½"
Thickness - 0.004" - 0.005



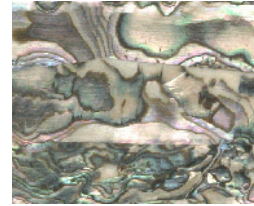
Agoya Heart
AB/AG



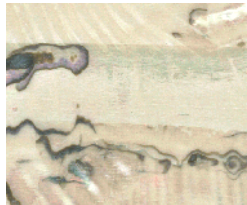
Donkey Ear
AB/DE



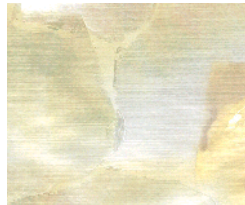
Green Dark
AB/GD



Green Heart
AB/GH



Green Light
AB/GL



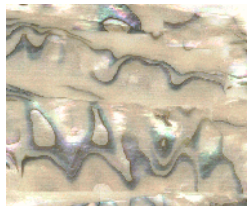
Gold Mop
AB/GM



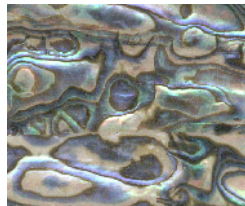
Goldlip Mop Mosaic
AB/GO



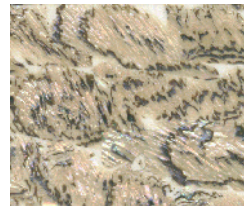
Greenlip
AB/GP



Pink
AB/PA



Paua Dark
AB/PD



Paua Heart
AB/PH



White Mop Mosaic
AB/WM

Abalone shell veneers are made from thinly sliced pieces of shell, glued together and sanded flat to form continuous sheets. This material is mainly used for surface overlays and inlays. Abalone lends itself to many applications including architectural surfaces, lighting fixtures, signs, furniture, musical instruments, jewelry and many more decorative projects.

The sheets are flexible and can be bent to a great degree especially when coated with a flexible resin or aliphatic polyurethane. Since the material is very thin, it has a high level of transparency allowing light to pass through, adding to its decorative effect when used on glass. For surface mounting, it is best to paint the back side of veneers to control their appearance.

Shell veneers can be easily cut with a sharp knife or scissors. It may be helpful to soak in water overnight prior to cutting. When cut with scissors it is advisable to apply adhesive tape to the top side to hold the material together and later remove when the material is fixed to the surface, alternatively it can be coated with resin or spray. Shell veneers can also be cut using various types of cutting machines such as with a laser or water jet.

WARNING: Avoid breathing dust from cutting, trimming or sanding.
Use appropriate dust protection when working with material.
Wash hands and tools thoroughly after use.

Australian Mother of Pearl Co. Pty Ltd

Tel: 61 3 9731 1607
A.C.N. 111 326 482

Fax: 61 3 9731 1808
A.B.N. 49 815 598 597

1 Botanic Way, Wyndham Vale VIC 3024 – Australia

Email: info@mopsupplies.com

Technical data sheet for laminated shell sheets

Laminated shell sheets

Made from genuine shell. Each sheet has same quality shell throughout consisting of layers of smaller shell pcs. Sheet size 240 x 140mm. Available in almost any thickness from 0.15, 0.5mm, 1mm, 1.3mm, 1.5mm, 2mm, 2.5mm, 3mm, 3.5mm and thicker if required.

Common applications:

Ideal for interior and exterior decorations, shell times, furniture inlay and overlay, general inlay work, jewellery, knife handles. Economical and easy to cut. Yielding larger sections of shell that are not available in solid form.

Shell type range:

Available shell types and shell section varieties: White Mother of Pearl, Black Mother of Pearl, Gold Mother of Pearl, Paua abalone, Green abalone, Pink abalone, Red abalone, Awabi (Goldfish), river shell, Green Turban, Aگویا, Donkey ear, Australian abalone, Brownlip Mother of Pearl.

Further processing:

This product can be further process using various conventional means i.e. laser cutter, water jet cutter, jewellery saw, sharp knife.

Material characteristics:

Similar hardness and properties as medium hardness stone between 3 and 3.5 hardness. The product is durable and scratch resistant.

Country of origin

Australia.