

Sepp Gilding Workshop

The Craftsperson's System



The Sepp Gilding Workshop is a complete family of professional quality products that makes the ancient craft of gilding accessible to both the experienced and new gilder. Each Gilding Kit contains carefully chosen supplies and easy to follow step by step instructions. Sepp Gilding Workshop lets you add the beauty of gilding to virtually any home, craft, art or design project.

Basic Gilding Kit

The **BASIC GILDING KIT** includes the tools and materials to apply metal leaf to a properly prepared surface. The prepared surface needs to be nonporous and smooth. A surface primer, such as shellac, is recommended. Imitation Gold Leaf and Copper Leaf must be sealed after gilding to prevent tarnishing. Lacquer, shellac or other high quality sealers are recommended. Imitation Gold Leaf, Aluminum Leaf and Copper Leaf are recommended for interior gilding projects.



Basic Gilding Kits Contain

Gilding Size - 4oz.	Natural Hair Brush
600 Wet/Dry Paper	Cotton & Mixing Sticks
	Book of Leaf

Basic Kit with Imitation Gold Leaf	BG2125
Basic Kit with Aluminum Leaf	BG2140
Basic Kit with Copper Leaf	BG2135

New Design Palette

This exciting addition offers **10 Patent Variegated Patterns** for crafts, woodworking and fine art. Ten leaves of different patterns in each book are provided in transfer form, so gilders can easily hold the carrier paper with adhered leaf. Design Palette makes it easy for anyone to add the beauty and sparkle of these unique leaf patterns to their decorative projects, including scrapbooks, canvas, plaster, ceramics, glass, paper, wood and much more.

You'll find more new products on page 3.

Gilding Project Kit

The **GILDING PROJECT KIT** contains the tools and materials to produce outstanding results. Each kit contains a four ounce can of Gilding Primer, Leaf Adhesive, Acrylic Clear Coat and a natural hair brush, plus a book of Imitation Gold, Aluminum or Copper



Leaf, or a book of Patent Gold or Patent Silver Leaf. All varieties of leaf are suitable for interior gilding projects. Genuine Gold Leaf and Aluminum Leaf are recommended for exterior projects.

Gilding Project Kits Contain

Gilding Primer - 4oz.	Natural Hair Brush
Leaf Adhesive - 4oz.	600 Wet/Dry Paper
Acrylic Clear Coat - 4oz.	Cotton Gloves
Cheesecloth & Mixing Sticks	Book of Leaf

Imitation Gold Leaf with Yellow Gilding Primer	GP2125
Aluminum Leaf with Gray Gilding Primer	GP2140
Copper Leaf with Red Gilding Primer	GP2135
Genuine Gold Leaf with Yellow Gilding Primer	GP23PA
Genuine Silver Leaf with Gray Gilding Primer	GP00SP

New Tamisé Leaf Flakes

Tamisé metal leaf flakes have arrived from Italy! Tamisé flakes provide glittering *rainbow* colors for the artist's palette in 12 new color combinations. This kaleidoscope of colors comes in clear boxes, 4 1/2" x 3" x 2".

Tamisé - Imit. Gold	S2725/5G
Tamisé - Copper	S2735/5G
Tamisé - Aluminum	S2740/5G
Tamisé - Var. Red	S2755/5G
Tamisé - Mix Gold	S2760/5G
Tamisé - Mix Copper	S2761/5G
Tamisé - Sunshine	S2762/5G
Tamisé - Var. Spring	S2763/5G
Tamisé - Mix Red	S2764/5G
Tamisé - Mix Spring	S2765/5G
Tamisé - Var. Fall	S2766/5G
Tamisé - Mix Fall	S2767/5G
Set of Twelve Shades	S2700/SET

The complete *Sepp Gilding Workshop* is available from our dealers nationwide.

Mica Powders and Kit



MICA POWDERS - 3.5oz in clear plastic jars



A wide range of metallic effects can be created with safe, environmentally friendly *mica powders*.

MICA POWDER KIT - 24 Colors in plastic bags

Mica powders are non-tarnishing and universal. They can be combined with virtually any medium and applied as a paint or glaze, creating a glowing metallic luster. Mica powders are *flash gilded* by dusting over a water-based or oil-based gilding adhesive, producing a highly reflective metallic finish.



Mica powders are versatile and encourage experimentation. Change the background color and mica powders take on different hues. Lessen the amount of powder in the medium, and the surface becomes translucent with an appearance of great depth. Simple steps and ease of mixing allow micas to be used imaginatively and effectively for interior and exterior projects.

The **MICA POWDER KIT** contains easy to follow, step by step instructions, tools and materials to produce outstanding results. Additional powders, gilding adhesives, and clear topcoat may be purchased separately.

MICA POWDER KIT Contains

- | | |
|---|-----------------------------|
| 24 Mica Powder Colors in resealable, clear plastic bags | |
| Gilding Size - 4oz. | 2-Natural Hair Brush |
| Leaf Adhesive - 4oz. | Cheesecloth & Mixing Sticks |
| Acrylic Clear Coat -4oz. | Complete Instructions |

Mica Powder 3.5oz. in Clear Plastic Jar	
M9110AB	Nu-Antique Silver
M9222G	Inca Gold
M9020C	Superwhite
M9212P	Sparkle Gold
M9110S	Super Sparkle
M9212GB	Nu-Antique Gold
M2000	Magna Pearl
M9350Z	Super Copper
M9250Z	Super Bronze
M9130Z	Bright Silver
M9340AB	Nu-Antique Copper
M9240AB	Nu-Antique Bronze
M9232Z	Super Brass
M9363C	Aztec Gold
M9350M	Micro Copper
M9250M	Micro Bronze
M9233X	Mayan Gold
M9222X	Majestic Gold
M9233XB	Sunset Gold
M9262M	Micro Brass
M9230Z	Hi-Lite Super Gold
M9260M	Micro Gold
MN001	Custom Silver
MN002	Custom Gold

Books of Metal Leaf

The *Sepp Gilding Workshop* includes three shades of metal leaf and three decorative patterns of variegated leaf. All packaged in books of 25 leaves, 5½" x 5½" each.

Imitation Gold Leaf	S2125/B
Aluminum Leaf	S2140/B
Copper Leaf	S2135/B
Red Variegated Leaf	S2155/B
Blue Variegated Leaf	S2165/B
Green Variegated Leaf	S2185/B

New Tesoro Ribbon Leaf

Available Summer 2006

Our newest addition, **Tesoro Ribbon Leaf**, is the easiest leaf to use so far, producing crisp, beautiful stripes and borders. Just hold one end of the ribbon and roll onto tacky size. Rub the backing paper and peel away. Tesoro Ribbon Leaf is great for anyone wanting to add gilding to highlight their project. Can be used to create faux inlay, gild fine wood projects, artwork on paper, albums, leather, fabric, plaster, stone, canvas, glass, metal, ornaments, baskets and more! In popular Imitation Gold, Aluminum, Copper, Variegated Red and Variegated Blue metal leaf.

Imitation Gold Leaf Roll ½" x 32'	SR2125
Aluminum Leaf Roll ½" x 32'	SR2140
Copper Leaf Roll ½" x 32'	SR2135
Red Variegated Leaf Roll ½" x 32'	SR2155
Blue Variegated Leaf Roll ½" x 32'	SR2165

Ribbon Metal Leaf

Ribbon metal leaf, ideal for narrow stripes or large expanses, is manufactured by placing individual leaves of 6" leaf on a continuous roll of paper. The leaf gently adheres to the paper for easy handling. Rolls are 164 feet long and cut to the widths listed below.

Imitation Gold Roll 1" x 164'	S25RL/1
Imitation Gold Roll 2" x 164'	S25RL/2
Imitation Gold Roll 6" x 164'	S25RL/6
Aluminum Roll 1" x 164'	S40RL/1
Aluminum Roll 2" x 164'	S40RL/2
Aluminum Roll 6" x 164'	S40RL/6
Copper Roll 1" x 164'	S35RL/1
Copper Roll 2" x 164'	S35RL/2
Copper Roll 6" x 164'	S35RL/6

New Schaibin Metal Leaf

Schaibin, the larger flake cousin to Tamisé, is now available in clear topped boxes, allowing the beauty of the imitation gold, aluminum and copper flakes to speak for itself! Schaibin is the *easy-to-gild* leaf that creates a splash on large expanses and is selected by decorative painters to create a distinctive, artistic look for the gilded surface.

Box of Imitation Gold Schaibin - 100g	S2625/100
Box of Aluminum Schaibin - 60g	S2640/60
Box of Copper Schaibin - 100g	S2635/100

Gilding Workshop Products

GILDING SIZE is a specially designed water-based adhesive for gilding with imitation gold, aluminum and copper leaf and for use with mica powders. It has a long tack time and will be ready for gilding after 15 to 30 minutes. Interior use only.

GS	Gilding Size - 4oz
GS/Q	Gilding Size - Quart
GS/GAL	Gilding Size - Gallon

GILDING PRIMER is an oil-based primer for use on wood, plaster, metal and composition surfaces that are to be gilded with all kinds of leaf. It seals the surface and provides an excellent base for Leaf Adhesive or Gilding Size and may be used as a base under mica powders. Available in yellow, red and gray, it provides a base color to hide any minute flaws that may appear in the gilded surface.

GP/Y	Yellow Gilding Primer - 4oz
GP/R	Red Gilding Primer - 4oz
GP/G	Gray Gilding Primer - 4oz

LEAF ADHESIVE is a specially designed oil-based size for gilding with genuine or imitation gold leaf, aluminum, copper, or genuine silver leaf and for use with mica powders. It has a fast tack time and will be ready for gilding after 1 to 3 hours.

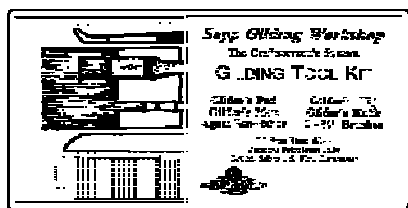
LA	Leaf Adhesive - 4oz
----	---------------------

ACRYLIC CLEAR COAT is a high gloss, durable top coat for genuine or imitation gold leaf, aluminum, copper, or genuine silver leaf. This sealer produces a long lasting film protecting the leafed surface from abrasion and tarnishing. Acrylic Clear Coat is a wonderful clear medium for use with mica powders.

ACC	Acrylic Clear Coat - 4oz
-----	--------------------------

Gilding Tool Kit

The *Sepp Gilding Workshop* GILDING TOOL KIT provides artists and hobbyists with a complete selection of high quality tools for water gilding and oil gilding with loose gold leaf.



GW/TOOL Gilding Tool Kit

- | | |
|--|-----------------|
| Gilder's Tip | Gilder's Pad |
| Gilder's Mop | Gilder's Knife |
| Two - 3/4" Brushes | Agate Burnisher |
| Oil Free Steel Wool | Wad of Cotton |
| Vaseline Petroleum Jelly, Paint Stirrers, Fine Sandpaper | |

Professional Products For the Gilder and Craftsperson

Sepp Leaf Products offers professional gilding products packaged specifically for the independent artist and gilder.

- | | |
|------------|------------------------------------|
| WHITING | French Whiting 1.5 lb. |
| RABBIT | Granular Rabbit Glue 1lb. |
| 33D/RED | Red Dry Cone Gilder's Clay 1lb. |
| 33D/YELLOW | Yellow Dry Cone Gilder's Clay 1lb. |
| 33D/BLACK | Black Dry Cone Gilder's Clay 1lb. |
| 33D/GRAY | Gray Dry Cone Gilder's Clay 1lb. |
| 33D/BLUE | Blue Dry Cone Gilder's Clay 1lb. |
| 33D/WHITE | White Dry Cone Gilder's Clay 1lb. |
| RSTONE | Rottenstone 5oz. |
| PUMICE | Pumice Powder 5oz. |

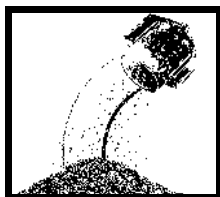
Decorate your holiday cakes with 23kt Gold Leaf.

New



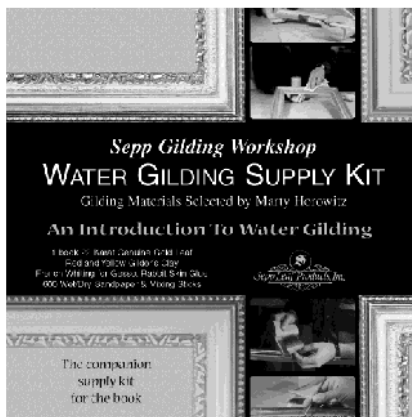
GOLDGOURMET brings the art of gilding to all chefs, bakers and confectioners. The simple process of adding elegant 23 karat edible gold leaf to fine baked goods, candies, and holiday cakes creates exquisite desserts and memorable dining experiences.

GOLDGOURMET now offers edible 23kt gold and silver flakes in elegant clear shakers. These flakes make elegant gifts and are easy for anyone to use to add the magic of gold leaf to their festive culinary creations.



Water Gilding Supply Kit

The water gilding series includes the WATER GILDING SUPPLY KIT, GILDING TOOL KIT and the book *An Introduction To Water Gilding*. Together they provide easy to follow step-by-step instructions and specially selected materials to beautifully gild any fine art or craft project with genuine gold leaf.



Marty Horowitz, founder of Goldleaf Framemakers of Santa Fe, has taught thousands of people how to gild. He selected the finest gilding materials for this kit providing all the materials required to water gild a frame, as discussed in his highly informative book, *An*

Introduction to Water Gilding. His step-by-step instructions and professional recipes will guide you in making glue for gesso, preparing gesso, mixing gilder's clay into bole, and laying genuine gold leaf.

WGKIT Water Gilding Supply Kit

- 1 Book 22 Karat *Monarch* Genuine Gold Leaf
- 25 Leaves 3d" x 3d"
- Approximately 2 square feet of material.
- 90 grams Pebble Rabbit Skin Glue
- 200 grams Red Gilder's Clay
- 200 grams Yellow Gilder's Clay
- 1 pound French Whiting for Gesso
- 600 Wet/Dry Sandpaper
- 4 Wood Mixing Sticks

An Introduction To Water Gilding by Marty Horowitz & Lou Tilmont

This long-awaited book from two gilding masters answers all your questions about materials and techniques. It's full of step-by-step instructions, photos of the techniques, and recipes that really work! This book will lead you through the complete process of water gilding, from the treatment of the raw wood, the preparation and application of gesso, preparing the clay, and laying leaf. There are also chapters on ways to seal and finish the framing using time-honed techniques. Both beginning and advanced gilders will gain much from this book.