



# The Gilding Arts Newsletter

...an educational resource  
for Gold Leaf Gilding

CHARLES DOUGLAS  
GILDING STUDIO  
Seattle, WA

## In This Issue

[Gilding Class Highlights](#)

[Project Spotlight](#)

[Letter from Gilder Charles  
Douglas](#)

[Goings on...in the Gilded  
Artworld](#)

[2016 Gilding Workshop  
Highlights](#)

[Newsletter Archive](#)

## Quick Links



## Quick Links

[Workshop Registration  
Form \(for mail-in  
registration only\)](#)

[A Gilder's Journal  
\(Blog\)](#)

[Gilding Studio...on  
Twitter](#)

[Uffizi Gallery](#)

[Galleria  
dell'Accademia di](#)

May 23, 2016

## Gold Leaf Gilding Class Highlights...coming in June!

### Seattle

June 2-4

Traditional Water Gilding

~

June 9 & 10

Glass Gilding, églomisé art glass

~

### New York

June 21

Gold Leaf Gilding...  
A Study for Fine Artists

~

June 22 & 23

Glass Gilding, églomisé glass art

~

June 24

Toning for Gilded Frames & Furniture

~

June 27-29

[Firenze](#)

[Frye Art Museum](#)

[Seattle Art Museum](#)

[Society of Guilders](#)

[Metropolitan Museum  
of Art](#)

[The Fricke Collection](#)

[Palace of Versailles](#)

[Museo Thyssen-  
Bornemisza](#)

[Sepp Leaf Products](#)



[GildedPlanet.com](#)

Join our list

Join Our Mailing List!

## Traditional Water Gilding

To register *Scroll Below* or visit:

[www.gildingstudio.com](http://www.gildingstudio.com)

or

[www.gildedplanet.com](http://www.gildedplanet.com)

(*Gilding Kits now available  
with student discount!*)

~

[Back to Top](#)

## *Project Spotlight...*

### **6kt White Gold Glass Gilded Tabletop**

The last newsletter issue we discussed the custom-built pair of vanities fabricated by New Dimensions Mirror and Glass in Bellevue, WA of which the Gilding Studio gilded

a multitude of glass sheets of varying sizes before being attached to the wood framework. Presented here is the matching tabletop, 1" thick and gilded in 6 kt White Gold Leaf with gelatin size.

The gilding was abraded by hand with cotton with a little help of pumice. Great care needs to be taken when rubbing glass gilding with such an abrasive, making sure that the gold does not come off too aggressively. The appearance of the abrasion tends to look best though when simply hand-rubbed with a



Gilded by Charles Douglas Gilding Studio, Seattle, WA; Fabricated by New Dimensions, Bellevue WA;

cotton ball and where the gelatin size is slightly weaker than normal to allow certain patches to appear which are then filled with the black backing-enamel. If the leaf is resistant towards being removed with hand-rubbing it's often an indication that the gelatin size was either quite strong or the leaf was left on the glass for more than a day before rubbing as the adhesion tends to get stronger over time.

For those interested in this technique of églomisé, please join us for a special two-day intensive June 22 & 23 at the Sepp Leaf Products showroom studio. We'll also be exploring the use of candle smoke on glass under white gold and Palladium leaf along with adding preparing gelatin size with a beautiful assortment of watercolors for special effects using 6kt white gold leaf.~



~

[Back to Top](#)

Greetings from Charles Douglas Gilding  
Studio

Dear Friends,

A very brief hello as Spring begins its segue into Summer! Today finds me back in New York City to meet some of you coming in from various places to study the



Rome, 2015

technique of Traditional Water Gilding. A great week lies ahead. In June we'll take a look at some of the many questions coming in including those from Instagram where the gilding studio can now be found (for the photo-minded of you!).

I am also happy to introduce online gilding retailer and new Gilding Arts Newsletter Sponsor GildedPlanet.com. Their contributions towards educational outreach, along with Sepp Leaf Products, is what helps us all continue to grow (after 31 years gilding I'm still learning - thank you [Alison](#) in Florence!!)

Till soon...

Peace, Health, and Clarity

~ Charles

*"Yes: I am a dreamer. For a dreamer is one who can only find his way by moonlight, and his punishment is that he sees the dawn before the rest of the world. "*

*Oscar Wilde, 1854-1900, The Critic as Artist*

~

[Back to Top](#)

## Goings on...*in the Gilded Artworld*

*Still to come in June!*...our promised visit with Fine Artist Alessandra Maria in an interview as she discusses her use of gold leaf in her art. *And...*a revisit to Ireland's beautiful St. Mel's Cathedral in



St. Mels Cathedral in Longford, Ireland

Longford and a long awaited conversation with gilder Eddie McGovern as he discusses his work in the restoration of the Cathedral's sacred gilding.

Coming August 4-7, 2016 is the return of The Seattle Artfair! As gilding continues to find its way into expressions in contemporary ways it's always exciting to see what we'll find. During the inaugural 2015 fair we were treated to Japanese artist Takashi Murakami's Dream Lion, beautifully gilded in Platinum leaf, presented through [Gagosian Gallery](#). For those interested in contemporary approaches to the use of gilding should explore his work. Take a peek at Murakami at Versailles (!)...



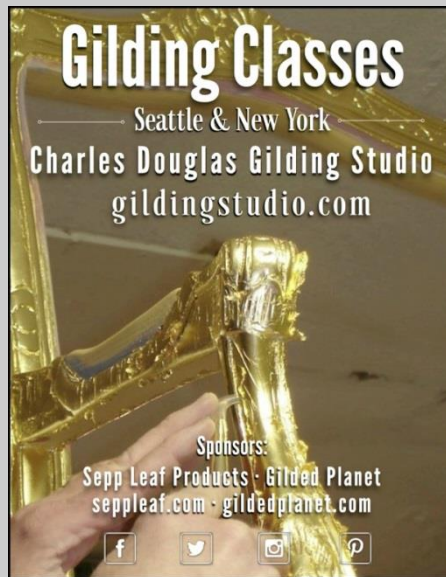
*A very special welcome* to online gold leaf gilding retailer [GildedPlanet.com](http://GildedPlanet.com) who is so graciously lending their support in our collaborative educational outreach program. Offering a wide selection of gold leaf, gilding materials and supplies from [Sepp Leaf Products](#) in New York students will find what they need to explore this intriguing and beautiful craft and artform. Visit [www.gildedplanet.com](http://www.gildedplanet.com) for specially prepared gilding kits for students!



~

[Back to Top](#)

**2016 Gilding Workshop Registration**



**Seattle**

~

Introduction to  
***Traditional Water Gilding***

June 2-4, 2016

(Class Fee: \$650)

[Pay Now](#)

**Glass Gilding:**  
***Mirrors & Glass Art***  
*...exploring the realm of Verre Églomisé*

June 9-10, 2016

(Class Fee: \$450)

[Pay Now](#)

~

**New York City**

**Gold Leaf Gilding**

*for Works of Art on Paper  
Canvas, & Panels*

*...a Study for Fine Artists*

June 21, 2016

(Class Fee: \$250)

[Pay Now](#)

~

Glass Gilding:

***Mirrors & Glass Art***

*...exploring the realm of Verre Églomisé*

June 22 - 23, 2016

(Class Fee: \$450)

[Pay Now](#)

~

Antiquing & Toning for  
***Gilded Frames & Furniture***

June 24, 2016

(Class Fee: \$250)

[Pay Now](#)

*Introduction to  
**Traditional Water Gilding***

June 27-29, 2016

(Class Fee: \$650)

[Pay Now](#)

~





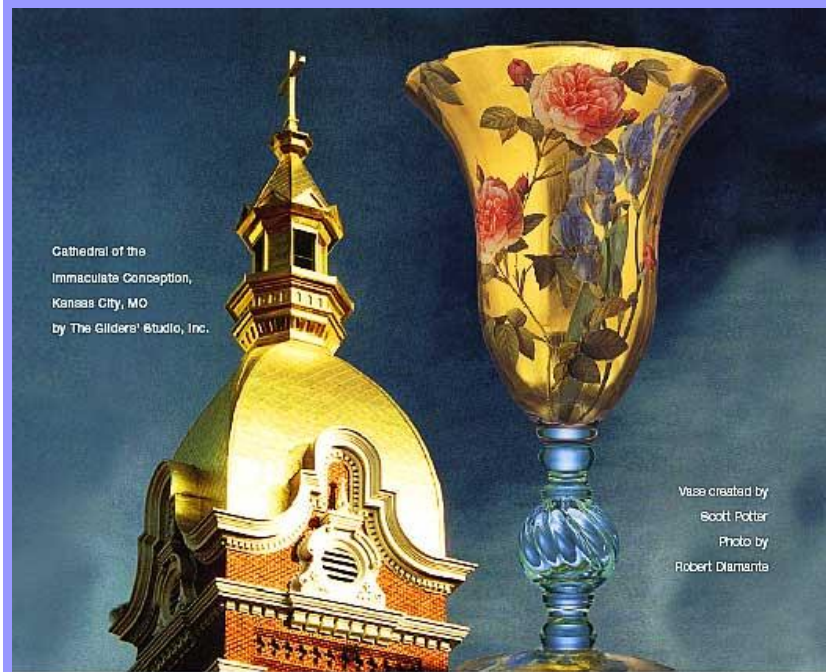
12kt White Gold Leaf Watergilded  
with a black casein wash applied  
over a shellac topcoat

*All classes provide the use of studio tools and  
materials. For those who wish to own their own  
Gilding Kit please visit [GildedPlanet.com](http://GildedPlanet.com)  
for a student discount!*

[www.gildedplanet.com](http://www.gildedplanet.com)



[Back to Top](#)



THERE ARE NO SMALL IDEAS IN LEAF.

GREAT WORKS IN GOLD LEAF BEGIN WITH **SeppLeaf**

ANY SIZE, ANY KARAT, ANY COLOR, CALL SEPP LEAF 800-971-7377 sales@seppleaf.com

## *Gold Leaf Gilding*



Gilding: Using the Gilder's Pad  
~ Charles Douglas Gilding Studio

## **Workshop Summaries**

### **Glass Gilding: Mirrors & Art Glass...exploring the realm of Verre Églomisé**

Offered as one or two day intensives as an introduction to the art of glass gilding, the basis for verre églomisé. Learn to apply genuine 12kt white gold, preparing glass for gilding, making gelatin size, & creating special effects including candle-smoked glass, abrading gold leaf, and the combined use of water color additives.

### **Introduction to Traditional Water Gilding**

Traditional Water Gilding is an ancient craft that goes back over 4,000 years ago to the early Egyptians. This popular workshop is an intensive, hands-on class that introduces the student to each step in the water gilding method as used on furniture, picture frames, and architectural detail. Learn to prepare gesso & clay bole grounds & lay & burnish genuine 23kt gold leaf. A field trip to the [Frye Art Museum](#) to view and study the gilded frame collection is included.

### **Gilding for works of art on Canvas, Paper, and Panels...a Study for Fine Artists (New!)**

Gold leaf has been used for centuries as both a component and surface background for works of art. From the earliest examples of iconography & 18th c Peruvian painters to Gustav Klimt and the modern day works of contemporary artists. This long-awaited one day intensive introduces the student to the methods & options available for the use of genuine gold leaf as a component within works of art.



Crackled gesso with 23k water gilded Pastiglia  
(raised gesso) on Canvas

~

*Class Size limited to 8 Students*

For more information visit [www.gildingstudio.com](http://www.gildingstudio.com)

[Back to Top](#)

## Back Issues of *The Gilding Arts Newsletter* Available in an Online Archive

*New Member? Missed an Issue?*

The [Gilding Arts Newsletter](#) periodically publishes technical information concerning the various methods of gold leaf gilding. Some of these topics are in series formats such as the series on Traditional Water Gilding.



All Newsletters are available online in an Archived format. Simply go to the [www.gildingstudio.com](http://www.gildingstudio.com)

website. The *Gilding Arts Newsletter* can be found on the left-hand side navigation bar. The ARCHIVE Link can be found at the top of the page.

Or, go to this Easy Link:  
[Gilding Arts Newsletter Archive](#)

[Back to Top](#)

Charles Douglas Gilding Studio, P.O. Box 9765, Seattle, WA 98109

[SafeUnsubscribe™ lauren@seppleaf.com](#)

[Forward email](#) | [Update Profile](#) | [About our service provider](#)

Sent by [charles.studio@usa.net](mailto:charles.studio@usa.net) in collaboration with

**Constant Contact** 

Try it free today